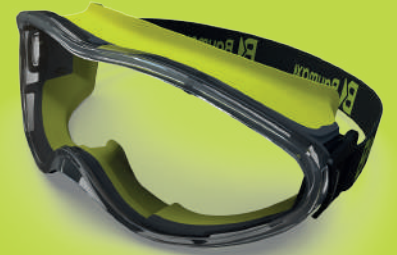


# **BI** Baymaxi®

PERSONAL PROTECTIVE EQUIPMENT



PRODUCT CATALOG



## Türkiye's Biggest Personal Protective Equipments Manufacturer



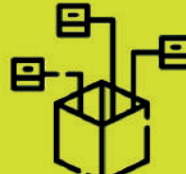
**300+**

Employees



**120+**

Machine Park



**900+**

Model Type



**40+**

Export Countries

## MURAT ERKEK

Chairman of the Board



We have always aimed to look ahead with the confidence of the knowledge and experience we have gained from the sector for about 27 years. By prioritizing our work quality and worker happiness, we have always ensured to keep our product quality at high levels.

We always strive to offer more to our customers by arranging each of the raw material, production, and quality control stages with care and by organizing

continuous business developments and R&D studies.

In this context, we are proud to be the largest in our country, and it is a great honor for us to serve our customers at an international level. We are always looking for ways to make our colleagues happy, and then our customers, with our ever-growing export range.

## About Us

Bayem Group was established in 2012 in Sancaktepe with the aim of wholesale hardware sales, in line with the experience and knowledge gained in the sector since 1995. For a long time, it has been the main dealer of the leading brands in the hardware sector and has realized wholesale marketing and distribution throughout Turkey.

Bayem Group, which started to take steps towards the production of Protective Glasses with the BAYMAX brand in 2018, continues its production, which started with 10 personnel, as the largest medical and protective glasses factory in Turkey and the nearby geography, with 350 personnel and 650 kinds of glasses production. Currently, the title of "Bayem Grup" is changed to "Baymax A.Ş." to elevate our brand.

Afterwards, Baymax established safety footwear facilities at 3 cities by the remarkable investment. 170 different variety safety footwear products range and more than 2.000.000 pairs capacity, Baymax has become one of the biggest industrial PPE manufacturer in Turkey.

Our vision is to provide the level of quality that will meet the expectations of our customers and to absorb this at all levels of our understanding of production. Our goal is to be at the top of the international market as the leading company just like the Turkish market.

Our mission is to be an institution that brings a new dimension to the sector and is shown as an example at the international level by developing innovative and modern approaches that help improve the business quality of its customers

## Our Quality Policy

As an organization that makes significant contributions to the country's economy, is aware of its responsibilities towards the environment and society, and has fulfilled the requirements of quality and technology, our goal is to ensure the continued satisfaction of our customers.

The only condition for sustaining our existence is to provide our customers with products and services that will provide the highest benefit and to be preferred. All of our employees see each other as a customer and are based on zero mistakes and continuous improvement.

We support and encourage the development of our personnel, being aware of the fact that the full satisfaction of our customers passes through the happiness and satisfaction of our employees. Working in mutual cooperation and trust with companies that provide us with products and services, reducing our costs, increasing our efficiency and long-term profitability is the only way to secure our future.

In this context, our aim is to adopt Total Quality Management and fulfill its requirements in order to systematically and regularly provide quality awareness in all fields of activity and service units. Realization of Total Quality Management is our duty and obligation as BAYMAX employees.





# STANDARTS

## SAFETY FOOTWEAR: EN ISO 20345: 2011

Safety footwear specifications with a resistance of 200 J in the toe cap.  
Grouping of regulatory requirements:

**SB:** Basic requirements: Toe cap 200J resistance.

**S1:** SB + closed heel area, antistatic properties, shock-absorption in the heel region, hydrocarbons resistant.

**S2:** S1 + upper resistance to water absorption and penetration.

**S3:** S2 + outsole puncture resistance.

## OCCUPATIONAL FOOTWEAR: EN ISO 20347: 2012

Safety footwear specifications without resistance in the toe cap.

**OB:** Basic requirements.

**O1:** OB + closed heel area, antistatic properties, shock-absorption in the heel region, hydrocarbons resistant.

**O2:** O1 + upper resistance to water absorption and penetration.

**O3:** O2 + outsole puncture resistance.

**A** Anti-static safety footwear.

**E** Energy absorption in the heel

**FO** Oil and hydrocarbons resistance.

**P** Perforation resistance no less than 1100N.

**WRU** Water penetration and absorption resistance

**WR** Waterproof footwear.

**HRO** Heat resistant sole for protection when walking on hot surfaces

**HI** Sole with heat insulation for protection when walking on hot surfaces.

**CI** Sole with cold insulation for protection when walking on cold surfaces.

**SRA** Maximum slip resistance on tiled floors with lubricant: water with detergent.

**SRB** Maximum slip resistance (stainless steel outsole with lubricant: glycerine).

**SRC** SRA + SRB: Maximum slip resistance on tiled floors with lubricant: water with detergent and on stainless steel outsole with lubricant: glycerine.

**ESD** It discharges the static electricity that accumulates in the body into the ground to prevent any damage to electronic devices (UNE EN 61340-5-1:2016).



# BX-01

## SAFETY SHOES

**GOLDEN S1 / S1P**

**SRC**  
SLIP RESISTANCE



### Upper

High quality genuine suede leather and textile upper.

### Lining

Breathable, abrasion resistant, moisture wicking textile lining.

### Insock

Anatomically shaped, full length, moisture absorbent, fast dry, removable insock.

### Toecap

Steel (200 J)

### Midsole

Steel (1100 N) only S1P models

### Outsole

Direct injected Dual Density PU/PU sole, Antistatic, Oil Resistant, Shock Absorber, Anti-Slip, SRC certified sole.

### Sizes

36 - 48



### PACKAGE DETAILS

Product Weight S1 (size 42): 1000 Gr  
Number of Boxes: 1 Pair  
Number of Parcels: 10 Pairs  
Parcel Weight: 12.15 Kgs  
Parcel Dimension: 60x44x36 Cm



**EN ISO 20345:2011**



Baymax



# BX-02

## SAFETY SHOES

**GOLDEN S2 / S3**

**SRC**  
SLIP RESISTANCE



### Upper

High quality water resistant genuine leather upper.

### Lining

Breathable, abrasion resistant, moisture wicking textile lining.

### Insock

Anatomically shaped, full length, moisture absorbent, fast dry, removable insock.

### Toecap

Steel (200 J)

### Midsole

Steel (1100 N) only S3 models

### Outsole

Direct injected PU sole, Antistatic, Oil Resistant, Shock Absorber, Anti-Slip, SRC certified sole.

### Sizes

36 - 48



### PACKAGE DETAILS

Product Weight S2 (size 42): 980 Gr

Number of Boxes: 1 Pair

Number of Parcels: 10 Pairs

Parcel Weight: 11.95 Kgs

Parcel Dimension: 60x44x36 Cm



**EN ISO 20345:2011**

# BX-03

## SAFETY SHOES

**GOLDEN S2 / S3**

**SRC**  
SLIP RESISTANCE



### Upper

High quality water resistant genuine leather upper.

### Lining

Breathable, abrasion resistant, moisture wicking textile lining.

### Insock

Anatomically shaped, full length, moisture absorbent, fast dry, removable insock.

### Toecap

Steel (200 J)

### Midsole

Steel (1100 N) only S3 models

### Outsole

Direct injected Dual Density PU/PU sole, Antistatic, Oil Resistant, Shock Absorber, Anti-Slip, SRC certified sole.

### Sizes

36 - 48



### PACKAGE DETAILS

Product Weight S2 (size 42): 1025 Gr

Number of Boxes: 1 Pair

Number of Parcels: 10 Pairs

Parcel Weight: 12.40 Kgs

Parcel Dimension: 60x44x36 Cm



**EN ISO 20345:2011**

# BX-04

## SAFETY SHOES

**GOLDEN S2 / S3**

**SRC**  
SLIP RESISTANCE



### Upper

High quality water resistant genuine leather upper.

### Lining

Breathable, abrasion resistant, moisture wicking textile lining.

### Insock

Anatomically shaped, full length, moisture absorbent, fast dry, removable insock.

### Toecap

Steel (200 J)

### Midsole

Steel (1100 N) only S3 models

### Outsole

Direct injected Dual Density PU/PU sole, Antistatic, Oil Resistant, Shock Absorber, Anti-Slip, SRC certified sole.

### Sizes

36 - 48



### PACKAGE DETAILS

Product Weight S2 (size 42): 1040 Gr

Number of Boxes: 1 Pair

Number of Parcels: 10 Pairs

Parcel Weight: 12.55 Kgs

Parcel Dimension: 60x44x36 Cm



**EN ISO 20345:2011**

# BX-05

## SAFETY SHOES

**GOLDEN S1 / S1P**

**SRC**  
SLIP RESISTANCE



### Upper

High quality genuine suede leather upper.

### Lining

Breathable, abrasion resistant, moisture wicking textile lining.

### Insock

Anatomically shaped, full length, moisture absorbent, fast dry, removable insock.

### Toecap

Steel (200 J)

### Midsole

Steel (1100 N) only S1P models

### Outsole

Direct injected Dual Density PU/PU sole, Antistatic, Oil Resistant, Shock Absorber, Anti-Slip, SRC certified sole.

### Sizes

36 - 48



### PACKAGE DETAILS

Product Weight S1 (size 42): 1010 Gr

Number of Boxes: 1 Pair

Number of Parcels: 10 Pairs

Parcel Weight: 12.16 Kgs

Parcel Dimension: 60x44x36 Cm



**EN ISO 20345:2011**

# BX-06 BLACK

## SAFETY SHOES

# GOLDEN S1 / S1P

**SRC**  
SLIP RESISTANCE



### Upper

High quality genuine leather upper.

### Lining

Breathable, abrasion resistant, moisture wicking textile lining.

### Insock

Anatomically shaped, full length, moisture absorbent, fast dry, removable insock.

### Toecap

Steel (200 J)

### Midsole

Steel (1100 N) only S1P models

### Outsole

Direct injected Dual Density PU/PU sole, Antistatic, Oil Resistant, Shock Absorber, Anti-Slip, SRC certified sole.

### Sizes

36 - 48



### PACKAGE DETAILS

Product Weight S1 (size 42): 960 Gr  
Number of Boxes: 1 Pair  
Number of Parcels: 10 Pairs  
Parcel Weight: 11.75 Kgs  
Parcel Dimension: 60x44x36 Cm



EN ISO 20345:2011

# BX-06 GREY

## SAFETY SHOES

**GOLDEN S1 / S1P**

**SRC**  
SLIP RESISTANCE



### Upper

High quality genuine suede leather upper.

### Lining

Breathable, abrasion resistant, moisture wicking textile lining.

### Insock

Anatomically shaped, full length, moisture absorbent, fast dry, removable insock.

### Toecap

Steel (200 J)

### Midsole

Steel (1100 N) only S1P models

### Outsole

Direct injected Dual Density PU/PU sole, Antistatic, Oil Resistant, Shock Absorber, Anti-Slip, SRC certified sole.

### Sizes

36 - 48



### PACKAGE DETAILS

Product Weight S1 (size 42): 932 Gr  
Number of Boxes: 1 Pair  
Number of Parcels: 10 Pairs  
Parcel Weight: 11.47 Kgs  
Parcel Dimension: 60x44x36 Cm



**EN ISO 20345:2011**

# BX-07

## SAFETY SHOES

**GOLDEN S2 / S3**

**SRC**  
SLIP RESISTANCE



### Upper

High quality water resistant genuine leather upper.

### Lining

Breathable, abrasion resistant, moisture wicking textile lining.

### Insock

Anatomically shaped, full length, moisture absorbent, fast dry, removable insock.

### Toecap

Steel (200 J)

### Midsole

Steel (1100 N) only S3 models

### Outsole

Direct injected Dual Density PU/PU sole, Antistatic, Oil Resistant, Shock Absorber, Anti-Slip, SRC certified sole.

### Sizes

36 - 48



### PACKAGE DETAILS

Product Weight S2 (size 42): 1000 Gr  
Number of Boxes: 1 Pair  
Number of Parcels: 10 Pairs  
Parcel Weight: 12.15 Kgs  
Parcel Dimension: 60x44x36 Cm



**EN ISO 20345:2011**



**BX-08 GOLDEN**  
**ARMOR LINE**

Baymax



# BX-08

## SAFETY SHOES

**GOLDEN S1 / S1P**  
**ARMOR**

**SRC**  
SLIP RESISTANCE



### Upper

High level breathable and durable textile upper.

### Lining

Breathable, abrasion resistant, moisture wicking textile lining.

### Insock

Anatomically shaped, full length, moisture absorbent, fast dry, removable insock.

### Toecap

Steel (200 J)

### Midsole

Steel (1100 N) only S1P models

### Outsole

Direct injected Dual Density PU/PU sole, Antistatic, Oil Resistant, Shock Absorber, Anti-Slip, SRC certified sole.

### Sizes

36 - 48



### PACKAGE DETAILS

Product Weight S1 (size 42): 930 Gr  
Number of Boxes: 1 Pair  
Number of Parcels: 10 Pairs  
Parcel Weight: 11.45 Kgs  
Parcel Dimension: 60x44x36 Cm



**EN ISO 20345:2011**



# BX-09

## SAFETY SHOES

**GOLDEN S2 / S3**



**SRC**  
SLIP RESISTANCE

### Upper

High quality water resistant genuine leather upper.

### Lining

Breathable, abrasion resistant, moisture wicking textile lining.

### Insock

Anatomically shaped, full length, moisture absorbent, fast dry, removable insock.

### Toecap

Steel (200 J)

### Midsole

Steel (1100 N) only S3 models

### Outsole

Direct injected Dual Density PU/PU sole, Antistatic, Oil Resistant, Shock Absorber, Anti-Slip, SRC certified sole.

### Sizes

36 - 48



### PACKAGE DETAILS

Product Weight S2 (size 42): - Gr  
Number of Boxes: 1 Pair  
Number of Parcels: 10 Pairs  
Parcel Weight: - Kgs  
Parcel Dimension: 60x44x36 Cm



**EN ISO 20345:2011**



# BX-10

## SAFETY SHOES

**GOLDEN S2 / S3**

**SRC**  
SLIP RESISTANCE



### Upper

High quality water resistant genuine haircell leather.

### Lining

Breathable, abrasion resistant, moisture wicking textile lining.

### Insock

Anatomically shaped, full length, moisture absorbent, fast dry, removable insock.

### Toecap

Steel (200 J)

### Midsole

Steel (1100 N) only S3 models

### Outsole

Direct injected Dual Density PU/PU sole, Antistatic, Oil Resistant, Shock Absorber, Anti-Slip, SRC certified sole.

### Sizes

36 - 48



### PACKAGE DETAILS

Product Weight S2 (size 42): 1040 Gr  
Number of Boxes: 1 Pair  
Number of Parcels: 10 Pairs  
Parcel Weight: 12.55 Kgs  
Parcel Dimension: 60x44x36 Cm



**EN ISO 20345:2011**

# BX-10 BLACK

## SAFETY SHOES

**GOLDEN S2 / S3**

**SRC**  
SLIP RESISTANCE



### Upper

High quality water resistant genuine haircell leather.

### Lining

Breathable, arasion resistant, moisture wicking textile lining.

### Insock

Anatomically shaped, full lenght, moisture absorbent, fast dry, removable insock.

### Toecap

Steel (200 J)

### Midsole

Steel (1100 N) only S3 models

### Diş Taban

Direct injected Dual Density PU/PU sole, Antistatic, Oil Resistant, Shock Absorber, Anti-Slip, SRC certified sole.

### Sizes

36 - 48



### PACKAGE DETAILS

Product Weight S2 (Size 42): 1010 Gr  
Number of Boxes: 1 Pair  
Number of Parcels: 10 Pairs  
Parcel Weight: 12.25 Kgs  
Parcel Dimension: 60x44x36 Cm



**EN ISO 20345:2011**

# BX-10 BROWN

## SAFETY SHOES

**GOLDEN S2 / S3**

**SRC**  
SLIP RESISTANCE



### Upper

High quality water resistant genuine crazy horse & nubuck leather.

### Lining

Breathable, abrasion resistant, moisture wicking textile lining.

### Insock

Anatomically shaped, full length, moisture absorbent, fast dry, removable insock.

### Toecap

Steel (200 J)

### Midsole

Steel (1100 N) only S3 models

### Outsole

Direct injected Dual Density PU/PU sole, Antistatic, Oil Resistant, Shock Absorber, Anti-Slip, SRC certified sole.

### Sizes

36 - 48



### PACKAGE DETAILS

Product Weight S2 (Size 42): 1010 Gr  
Number of Boxes: 1 Pair  
Number of Parcels: 10 Pairs  
Parcel Weight: 12.25 Kgs  
Parcel Dimension: 60x44x36 Cm



**EN ISO 20345:2011**



Всунув



# BX-11

## SAFETY SHOES

**GOLDEN S2 / S3**



**SRC**  
SLIP RESISTANCE



### Upper

High quality water resistant genuine haircell leather.

### Lining

Breathable, abrasion resistant, moisture wicking textile lining.

### Insock

Anatomically shaped, full length, moisture absorbent, fast dry, removable insock.

### Toecap

Steel (200 J)

### Midsole

Steel (1100 N) only S3 models

### Outsole

Direct injected Dual Density PU/PU sole, Antistatic, Oil Resistant, Shock Absorber, Anti-Slip, SRC certified sole.

### Sizes

36 - 48



### PACKAGE DETAILS

Product Weight S2 (size 42): 1050 Gr  
Number of Boxes: 1 Pair  
Number of Parcels: 10 Pairs  
Parcel Weight: 12.65 Kgs  
Parcel Dimension: 60x44x36 Cm



**EN ISO 20345:2011**

# BX-11 BLACK

## SAFETY SHOES

**GOLDEN S2 / S3**

**SRC**  
SLIP RESISTANCE



### Upper

High quality water resistant genuine crazy horse & nubuck leather.

### Lining

Breathable, abrasion resistant, moisture wicking textile lining.

### Insock

Anatomically shaped, full length, moisture absorbent, fast dry, removable insock.

### Toecap

Steel (200 J)

### Midsole

Steel (1100 N) only S3 models

### Outsole

Direct injected Dual Density PU/PU sole, Antistatic, Oil Resistant, Shock Absorber, Anti-Slip, SRC certified sole.

### Sizes

36 - 48



### PACKAGE DETAILS

Product Weight S2 (size 42): 1050 Gr

Number of Boxes: 1 Pair

Number of Parcels: 10 Pairs

Parcel Weight: 12.65 Kgs

Parcel Dimension: 60x44x36 Cm



**EN ISO 20345:2011**

# BX-11 BROWN

## SAFETY SHOES

**GOLDEN S2 / S3**

**SRC**  
SLIP RESISTANCE



### Upper

High quality water resistant genuine crazy horse & nubuck leather.

### Lining

Breathable, abrasion resistant, moisture wicking textile lining.

### Insock

Anatomically shaped, full length, moisture absorbent, fast dry, removable insock.

### Toecap

Steel (200 J)

### Midsole

Steel (1100 N) only S3 models

### Outsole

Direct injected Dual Density PU/PU sole, Antistatic, Oil Resistant, Shock Absorber, Anti-Slip, SRC certified sole.

### Sizes

36 - 48



### PACKAGE DETAILS

Product Weight S2 (size 42): 1050 Gr

Number of Boxes: 1 Pair

Number of Parcels: 10 Pairs

Parcel Weight: 12.65 Kgs

Parcel Dimension: 60x44x36 Cm



**EN ISO 20345:2011**



# S-01

## SAFETY SHOES

**SILVER S1 / S1P**

**SRC**  
SLIP RESISTANCE



### Upper

High quality genuine suede leather and textile upper.

### Lining

Breathable, abrasion resistant, moisture wicking textile lining.

### Insock

Anatomically shaped, full length, moisture absorbent, fast dry, removable insock.

### Toecap

Steel (200 J)

### Midsole

Steel (1100 N) only S1P models

### Outsole

Direct injected polyurethane PU sole, Antistatic, Oil Resistant, Shock Absorber, Anti-Slip, SRC certified sole.

### Sizes

40 - 45



### PACKAGE DETAILS

Product Weight S1 (size 42): 1000 Gr

Number of Boxes: 1 Pair

Number of Parcels: 20 Pairs

Parcel Weight: 23.75 Kgs

Parcel Dimension: 63x44x64 Cm



**EN ISO 20345:2011**

# S-04

## SAFETY SHOES

**SILVER S1 / S1P**

**SRC**  
SLIP RESISTANCE



### Upper

High quality genuine suede leather and textile upper.

### Lining

Breathable, abrasion resistant, moisture wicking textile lining.

### Insock

Anatomically shaped, full length, moisture absorbent, fast dry, removable insock.

### Toecap

Steel (200 J)

### Midsole

Steel (1100 N) only S1P models

### Outsole

Direct injected polyurethane PU sole, Antistatic, Oil Resistant, Shock Absorber, Anti-Slip, SRC certified sole.

### Sizes

40 - 45



### PACKAGE DETAILS

Product Weight S1 (size 42): 975 Gr  
Number of Boxes: 1 Pair  
Number of Parcels: 20 Pairs  
Parcel Weight: 23.25 Kgs  
Parcel Dimension: 63x44x64 Cm



**EN ISO 20345:2011**

# S-02

## SAFETY SHOES

**SILVER S2 / S3**

**SRC**  
SLIP RESISTANCE



### Upper

High quality water resistant genuine leather upper.

### Lining

Breathable, abrasion resistant, moisture wicking textile lining.

### Insock

Anatomically shaped, full length, moisture absorbent, fast dry, removable insock.

### Toecap

Steel (200 J)

### Midsole

Steel (1100 N) only S3 models

### Outsole

Direct injected polyurethane PU sole, Antistatic, Oil Resistant, Shock Absorber, Anti-Slip, SRC certified sole.

### Sizes

40 - 45



### PACKAGE DETAILS

Product Weight S2 (size 42): 970 Gr

Number of Boxes: 1 Pair

Number of Parcels: 20 Pairs

Parcel Weight: 23.10 Kgs

Parcel Dimension: 63x44x64 Cm



**EN ISO 20345:2011**

# S-03

## SAFETY SHOES

SILVER S2 / S3



**SRC**  
SLIP RESISTANCE



### Upper

High quality water resistant genuine leather upper.

### Lining

Breathable, abrasion resistant, moisture wicking textile lining.

### Insock

Anatomically shaped, full length, moisture absorbent, fast dry, removable insock.

### Toecap

Steel (200 J)

### Midsole

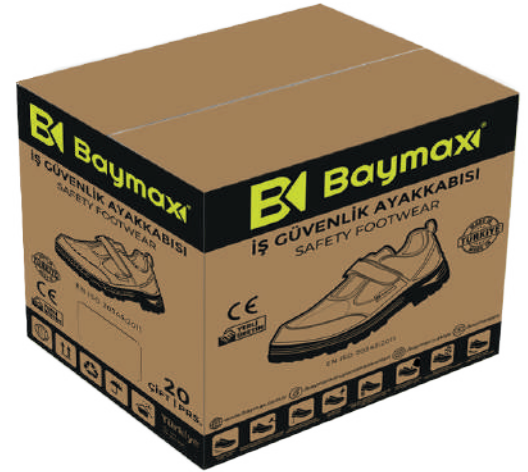
Steel (1100 N) only S3 models

### Outsole

Direct injected polyurethane PU sole, Antistatic, Oil Resistant, Shock Absorber, Anti-Slip, SRC certified sole.

### Sizes

40 - 45



### PACKAGE DETAILS

Product Weight S2 (size 42): 1020 Gr  
Number of Boxes: 1 Pair  
Number of Parcels: 20 Pairs  
Parcel Weight: 24.15 Kgs  
Parcel Dimension: 63x44x64 Cm



EN ISO 20345:2011



# S-05

## SAFETY SHOES

**SILVER S2 / S3**

**SRC**  
SLIP RESISTANCE



### Upper

High quality water resistant genuine leather upper.

### Lining

Breathable, abrasion resistant, moisture wicking textile lining.

### Insock

Anatomically shaped, full length, moisture absorbent, fast dry, removable insock.

### Toecap

Steel (200 J)

### Midsole

Steel (1100 N) only S3 models

### Outsole

Direct injected polyurethane PU sole, Antistatic, Oil Resistant, Shock Absorber, Anti-Slip, SRC certified sole.

### Sizes

40 - 45



### PACKAGE DETAILS

Product Weight S2 (size 42): 1000 Gr

Number of Boxes: 1 Pair

Number of Parcels: 20 Pairs

Parcel Weight: 23.75 Kgs

Parcel Dimension: 63x44x64 Cm



**EN ISO 20345:2011**

# S-06

## SAFETY SHOES

**SILVER S1 / S1P**

**SRC**  
SLIP RESISTANCE



### Upper

High quality water resistant genuine leather upper.

### Lining

Breathable, abrasion resistant, moisture wicking textile lining.

### Insock

Anatomically shaped, full length, moisture absorbent, fast dry, removable insock.

### Toecap

Steel (200 J)

### Midsole

Steel (1100 N) only S1P models

### Outsole

Direct injected polyurethane PU sole, Antistatic, Oil Resistant, Shock Absorber, Anti-Slip, SRC certified sole.

### Sizes

40 - 45



### PACKAGE DETAILS

Product Weight S1 (size 42): 945 Gr

Number of Boxes: 1 Pair

Number of Parcels: 20 Pairs

Parcel Weight: 22.65 Kgs

Parcel Dimension: 63x44x64 Cm



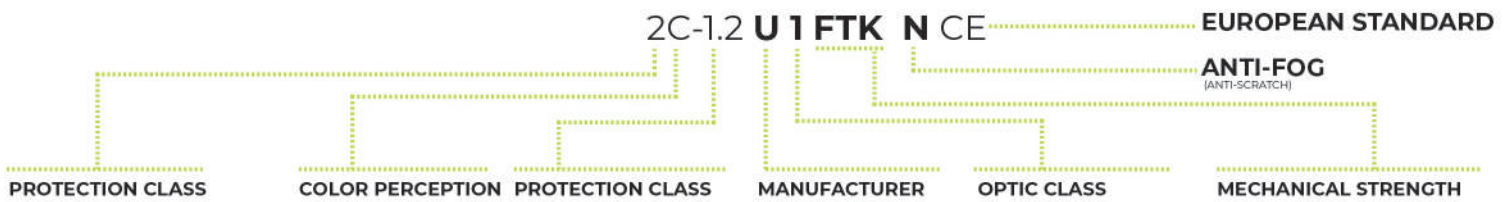
**EN ISO 20345:2011**



**BX-08 GOLDEN**  
***ARMOR LINE***

Baymax

## LENS AND FRAME MARKINGS AND THEIR MEANINGS



### MEANINGS OF MARKINGS

CODE NUM.	DETAIL	DARKNESS NUM.	DETAIL	VLT
2	Ultraviolet (UV)	1.2	Transparent	%100 – %74.4
2C & 3	Good color separation (UV)	1.7	Indoor/Outdoor, Yellow, Transparent, Mirrored, UVR	%58.1 – %43.2
4	Infrared (IR)	2.5	Brown, Gray	%29.1 – %17.8
5	Sunlight filter without IR feature	3.1	G15, Gray Mirrored	%17.8 – %8
6	Sunlight filter with IR	3,4,5,...11	Welder	-

#### PROTECTION CLASS

2 or 3: UV filter (EN170)  
4: IR filter (EN171)  
5 or 6: sunglare filter (EN172)

#### COLOR PERCEPTION

C: Undistorted color detection

#### OPTICAL CLASS

1 High optical quality No optical distortion  
(Suitable for continuous use)

#### LENS DARKNESS

C: Undistorted color detection

#### MANUFACTURER

Manufacturer Identification  
(Logo, Emblem)

### PROTECTION AGAINST HIGH-SPEED FOREIGN OBJECT SPLASHES

MECHANICAL RESISTANCE	IMPACT LEVEL	MAX. SPEED	DIAMETER	GRAM	LENS MATERIAL	GOGGLES	FULL PROTECTION GOGGLES	FACE VISOR
A	High Energy Impact	190m/sn	ø 6mm	0.86 gr	Polycarbonate			+
B	Medium Energy Impact	120m/sn	ø 6mm	0.86 gr	Polycarbonate		+	+
F	Low-Energy Impact	45m/sn	ø 6mm	0.86 gr	Polycarbonate	+	+	+
S	Increased Force	5.1m/sn	ø 22mm	43 gr	CR39, Toughened Glass	+	+	+

The letter "T" used just after the F, B, A mechanical strength symbol means it provides protection against high velocity particles at extreme temperatures.

### MECHANICAL STRENGTH

**S:** Very strong, 22mm diameter, 43gr weight, resistant to a ball dropped from 1.30m height

**F:** Low-energy impact, resistance to a ball with a diameter of 6mm, a weight of 0.86gr, and a speed of 45m/sec.

**B:** Moderate impact, resistance to a ball with a diameter of 6mm, a weight of 0.86gr, and a speed of 120m/sec.

**A:** High-energy impact, resistance to a ball with a diameter of 6mm, a weight of 0.86gr, and a speed of 190m/sec.

**K:** Resistance to surface damage with real particles (Optional)

**N:** ANTI-FOG (Optional)

**T:** Allows use in the presence of high-speed particles with extreme temperatures, immediately after the mechanical strength symbol

If there is an odd number for the filter and the code, the filter is a welding filter.

**VLT:** Visible light transmittance.

### OPTICAL CLASS

OPTICAL CLASS	CIRCULAR REFRACTION FORCE	ASTIGMATIC REFRACTION STRENGTH
1	± 0.06	0.06
2	± 0.12	0.12
3	± 0.12 / 0.25	0.25

### OPTIONAL REQUIREMENTS

K	Particle surface damage resistance
N	Lens fogging resistance
T	Protection against high-speed particles at extreme temperatures
H	Frame suitable for small faces
R	Improved mirroring

### USAGE AREA BY CODE

CODES	USAGE AREA	FULL PROTECTION GOGLES	FACE VISOR
NO CODE	Unidentified mechanical risks, risks from UV, visible IR and solar radiation		
3	Chemical Liquids (Drop and Splash)	+	+
4	Particle size >Dust larger than 5µm	+	
5	Gas, vapor, spray, smoke and particle size < Powders smaller than 5µm	+	
8	Protection from live contact and short-circuit electric arcs		+
9	Protection from hot liquids and solids, intense heat radiation, radiant heat protection from furnaces.	+	+



**STANDARD**



**ANTI-FOG**

**ANTI-FOG TECHNOLOGY PROVIDES ITS USERS ADVANCED COMFORT AND PREVENTS FOG AND SCRATCHING.**

## EN STANDARDS FOR HEAD PROTECTIVES

EN Standards for Helmets, Visor Helmets, Caps, Knitted Caps and Hats

<b>EN ISO 13 911</b>	This standard covers minimum safety requirements and test methods for a fire hood worn during firefighting and related activities.
<b>EN 397+A1</b>	This standard covers the physical and performance characteristics, test methods and marking of industrial safety helmets.
<b>EN 50365</b>	This standard covers electrically insulated heads for use in low voltage installations.
<b>EN 471</b>	This standard specifies requirements for protective clothing designed to visually indicate the presence of the user in dangerous situations under the illumination of vehicle headlights in daylight and in the dark.
<b>EN 443</b>	This standard covers the basic requirements for durability, comfort and level of protection for the firefighter's helmet.
<b>EN 14458</b>	Face shields and eye shields for use by firefighters, high performance industrial safety helmets for use in firefighters, ambulance and emergency services
<b>EN 171</b>	This standard covers the scale numbers and permeability characteristics of filters providing protection against infrared radiation.
<b>EN 812:2012</b>	Bump cap, it covers the physical rules, performance rules, test methods and marking rules for bump caps used in industry.
<b>EN 12492</b>	Mountaineering Equipment - Protective Headgear for Mountaineers - Safety Rules and Test Methods
<b>EN 812-2012</b>	Specifies physical and performance requirements, methods of test and marking requirements for industrial bump caps. Industrial bump caps are intended to provide protection to the wearer against the effects of striking his head against hard, stationary objects with sufficient severity to cause laceration or other superficial injuries. They are not intended to provide protection against the effects of falling or thrown objects, or moving or suspended loads.

## EN STANDARDS FOR EYE AND FACE PROTECTIVES

<b>EN 166</b>	Technical performance standard
<b>EN 167</b>	Methods for optical testing
<b>EN 168</b>	Tests Other Than Optical tests
<b>EN 169</b>	Welding filters
<b>EN 170</b>	Ultraviolet filters
<b>EN 171</b>	Infrared ray filters
<b>EN 172</b>	Sunglare filters for industrial use
<b>EN 175</b>	Face protection equipment in welding operations
<b>EN 207</b>	Laser protective product
<b>EN 208</b>	Protectors for laser adjustment
<b>EN 379</b>	Covers requirements for automatic welding filters that change the light transmittance to a predetermined lower value when a welding arc is ignited.
<b>EN 1731</b>	Covers test methods and marking rules for cage-type eye and face protectors.

## TECHNICAL SPECIFICATIONS OF COLORED GLASSES

### SMOKE

It protects the eyes against sunlight and glare. It helps to distinguish traffic lights while driving. It provides a better adaptation of the eye due to the color of the lens while making contrast in light changes. Provides protection with UV filter to 99.9% radiation up to 385 nm.



### BLACK

Recommended for welding.  
Provides protection for infrared rays.

### YELLOW

It increases the light in low light conditions and reduces the tiring effect of light in high light environments. Provides protection with UV filter to 99.9% radiation up to 400 nm.



### BLUE

Provides protection against invisible rays (INFRARED) in molten metal and splashes in extremely hot areas.

### RED

It guarantees protection against impacts and provides protection by reducing harmful UVA & UVB rays up to 25 nm. This lens absorbs 99.9% of UV rays up to 525 nm.



### GREEN

Ideal for both sunny and low-light environments, green lenses have a way of reducing glare while brightening shadows. Perfect for outdoor sports, cycling or skiing, these lenses protect and comfort your eyes on foggy, cloudy, or bright, sunshiny days. Provides protection with UV filter to 99.9% radiation up to 385 nm.

### RAINBOW MIRRORED

Helps reduce reflections and glare. Suitable for daytime use at many outdoor areas. The mirror coating reflects light and reduces the amount of light passing through the lens.



### SILVER MIRRORED

It protects the eye from being damaged by sunlight and glare. It helps to distinguish traffic lights while driving. It provides UV filter protection against 99.9% radiation up to 385 nm.



# SINGLE STAND

120 CM

220 CM





# DOUBLE STAND



# S-600

GLASSES SET  
WITH BAG

2 DIFFERENT  
FRAME OPTIONS



7 DIFFERENT  
COLOR OPTIONS



BAG &  
GLASS CLEANING WIPES



 ANTI-FOG

# S-300 SPORT



It offers full comfort with its silicone nose pad.



Standart	B01-0300-0002	B01-0300-0003	B01-0300-0004	B01-0300-0005	B01-0300-0006	B01-0300-0007	B01-0300-0201	-	B01-0300-0301
Anti-Fog	B01-0300-0102	B01-0300-0103	B01-0300-0104	B01-0300-0105	B01-0300-0106	B01-0300-0107	-	-	B01-0300-0301



Note: The "+" symbol Indicates Addable Features.

## Product Code

B01-0300-0001

B01-0300-0101 AAnti-Fog

## Technical Details Body

Side Arms	
Material	Polyamide 6, PP
Marking	
Manufacturer´s ID code	W
Applicable EN norm	166, 170
Impact resistance	F (45 m/s)
Resistance to high speed particles at extremes of temperature	T
Conformity symbol	CE

## Technical Details Lens

Material	Polycarbonate
Thickness	1.9 mm at PD
Coating (Optional)	ANTI-FOG
UV protection	UV 400
Marking	
Filter	2C-1.2 (EN 170)
Manufacturer´s ID code	W
Optical class	2
Impact resistance	F (45 m/s)
Resistance to high speed particles at extremes of temperature	T
Scratch resistance	K
Antifog	N
Conformity symbol	CE



## PACKAGE DETAILS

Product Weight: 30 Gr  
 Number of Boxes: 12 Pieces  
 Number of Parcels: 360 Pieces  
 Parcel Weight: 15 Kg  
 Parcel Dimension: 56x50x56 Cm



# S-400 STANDARD



Note: The "+" symbol Indicates Addable Features.

## Product Code

B01-0400-0001  
B01-0400-0401 Anti-Fog

## Technical Details Body

Side Arms	
Material	Polyamide 6, Polypropylene
Marking	
Manufacturer´s ID code	W
Applicable EN norm	166, 170
Impact resistance	F (45 m/s)
Resistance to high speed particles at extremes of temperature	T
Conformity symbol	CE

## Technical Details Lens

Material	Polycarbonate
Thickness	1.9 mm at PD
Coating (Optional)	ANTI-FOG
UV protection	UV 400
Marking	
Filter	2C-1.2 (EN 170)
Manufacturer´s ID code	W
Optical class	2
Impact resistance	F (45 m/s)
Resistance to high speed particles at extremes of temperature	T
Scratch resistance	K
Antifog	N
Conformity symbol	CE



## PACKAGE DETAILS

Product Weight: 30 Gr  
Number of Boxes: 12 Pieces  
Number of Parcels: 360 Pieces  
Parcel Weight: 15,5 Kg  
Parcel Dimension: 56x50x56 Cm



# S-500 DYNAMIC



Standart	B01-0500-0002	B01-0500-0003	B01-0500-0004	B01-0500-0005	B01-0500-0006	B01-0500-0007	B01-0500-0201	-
Anti-Fog	B01-0500-0102	B01-0500-0102	B01-0500-0104	B01-0500-0105	B01-0500-0106	B01-0500-0107	-	B01-0500-0301



Note: The "+" symbol Indicates Addable Features.

## Product Code

B01-0500-0001  
B01-0500-0101 Anti-Fog

## Technical Details Body

Side Arms	
Material	Polypropylene, PVC
Marking	
Manufacturer´s ID code	W
Applicable EN norm	166, 170
Impact resistance	F (45 m/s)
Resistance to high speed particles at extremes of temperature	T
Conformity symbol	CE

## Technical Details Lens

Material	Polycarbonate
Thickness	1.9 mm at PD
Coating (Optional)	ANTI-FOG
UV protection	UV 400
Marking	
Filter	2C-1.2 (EN 170)
Manufacturer´s ID code	W
Optical class	2
Impact resistance	F (45 m/s)
Resistance to high speed particles at extremes of temperature	T
Scratch resistance	K
Antifog	N
Conformity symbol	CE



## PACKAGE DETAILS

Product Weight: 23 Gr  
Number of Boxes: 12 Pieces  
Number of Parcels: 360 Pieces  
Parcel Weight: 15,5 Kg  
Parcel Dimension: 56x50x56 Cm



# ANTI-FOG

## TECHNOLOGY



STANDARD

ANTI-FOG

The anti-fog coating protects the glasses from **fogging and scratching**.

## S-501 INTEGRAL BLUE GLASS

## S-502 INTEGRAL BLACK GLASS



### Product Code

B01-0501-0001

### Product Code

B01-0502-0001

### Technical Details Body

<b>Side Arms</b>	
Material	Polypropylene, PVC
<b>Marking</b>	
Manufacturer´s ID code	W
Applicable EN norm	166, 170
Impact resistance	F (45 m/s)
Resistance to high speed particles at extremes of temperature	T
Conformity symbol	CE

### Technical Details Lens

Material	Polycarbonate
Thickness	1.9 mm at PD
UV protection	UV 400
<b>Marking</b>	
Filter	2C-1.2 (EN 170)
Manufacturer´s ID code	W
Optical class	2
Impact resistance	F (45 m/s)
Resistance to high speed particles at extremes of temperature	T
Scratch resistance	K
Antifog	N
Conformity symbol	CE



### PACKAGE DETAILS

Product Weight: 122 Gr  
 Number of Boxes: 12 Pieces  
 Number of Parcels: 144 Pieces  
 Parcel Weight: 21 Kg  
 Parcel Dimension: 57x39x57 Cm



# S-503 MASTER'S GLASSES



Standart	B01-0503-0002	B01-0503-0003	B01-0503-0004	B01-0503-0005	B01-0503-0006	B01-0503-0007	B01-0503-0201	-	B01-0503-0301
Anti-Fog	B01-0503-0102	B01-0503-0103	B01-0503-0104	B01-0503-0105	B01-0503-0106	B01-0503-0107	-	-	B01-0503-0301



Note: The "+" symbol Indicates Addable Features.

## Product Code

B01-0503-0001  
B01-0503-0101 Anti-Fog

## Technical Details Body

Side Arms	
Material	Polypropylene
Marking	
Manufacturer 's ID code	W
Applicable EN norm	166, 170
Impact resistance	F (45 m/s)
Resistance to high speed particles at extremes of temperature	T
Conformity symbol	CE

## Technical Details Lens

Material	Polycarbonate
Thickness	1.9 mm at PD
Coating (Optional)	ANTI-FOG
UV protection	UV 400
Marking	
Filter	2C-1.2 (EN 170)
Manufacturer 's ID code	W
Optical class	2
Impact resistance	F (45 m/s)
Resistance to high speed particles at extremes of temperature	T
Scratch resistance	K
Antifog	N
Conformity symbol	CE



## PACKAGE DETAILS

Product Weight: 35 Gr  
Number of Boxes: 12 Pieces  
Number of Parcels: 360 Pieces  
Parcel Weight: 17 Kg  
Parcel Dimension: 56x50x56 Cm





# S-600 STYLE



Standart	B01-0600-0002	B01-0600-0003	B01-0600-0004	B01-0600-0005	B01-0600-0006	B01-0600-0007	B01-0600-0201	-
Anti-Fog	B01-0600-0102	B01-0600-0102	B01-0600-0104	B01-0600-0105	B01-0600-0106	B01-0600-0107	-	B01-0600-0301



Can be personalised with 2 frame options and different colored spare lenses. Temples can be adjusted forward and backwards for extra comfort.



UV Resistance



Anti-Reflective



Anti-Glare



Anti-Scratch



Anti-Fog



Protects from Sun



Anti-Stain



Anti-Dust

Note: The "+" symbol Indicates Addable Features.

## Product Code

B01-0600-0001

B01-0600-0101 Anti-Fog

## Technical Details Body

Side Arms	
Material	Polyamide 6, Polypropylene
Marking	
Manufacturer´s ID code	W
Applicable EN norm	166, 170
Impact resistance	F (45 m/s)
Resistance to high speed particles at extremes of temperature	T
Conformity symbol	CE

## Technical Details Lens

Material	Polycarbonate
Thickness	1.9 mm at PD
Coating (Optional)	ANTI-FOG
UV protection	UV 400
Marking	
Filter	2C-1.2 (EN 170)
Manufacturer´s ID code	W
Optical class	2
Impact resistance	F (45 m/s)
Resistance to high speed particles at extremes of temperature	T
Scratch resistance	K
Antifog	N
Conformity symbol	CE



## PACKAGE DETAILS

Product Weight: 28 Gr  
 Number of Boxes: 12 Pieces  
 Number of Parcels: 360 Pieces  
 Parcel Weight: 15,5 Kg  
 Parcel Dimension: 56x50x56 Cm



# S-600 ANTI-FOG GLASSES SET WITH BAG

It can be used with 2 different frame options.



With 4 different lens options, you can use the lens in any color you want.



There is an option to add 3 different lens to your bag.



It can be attached to the trouser belt, it is made of shock and water resistant special fabric. There are special sections for lenses inside.



## Product Code

B01-0600-0901

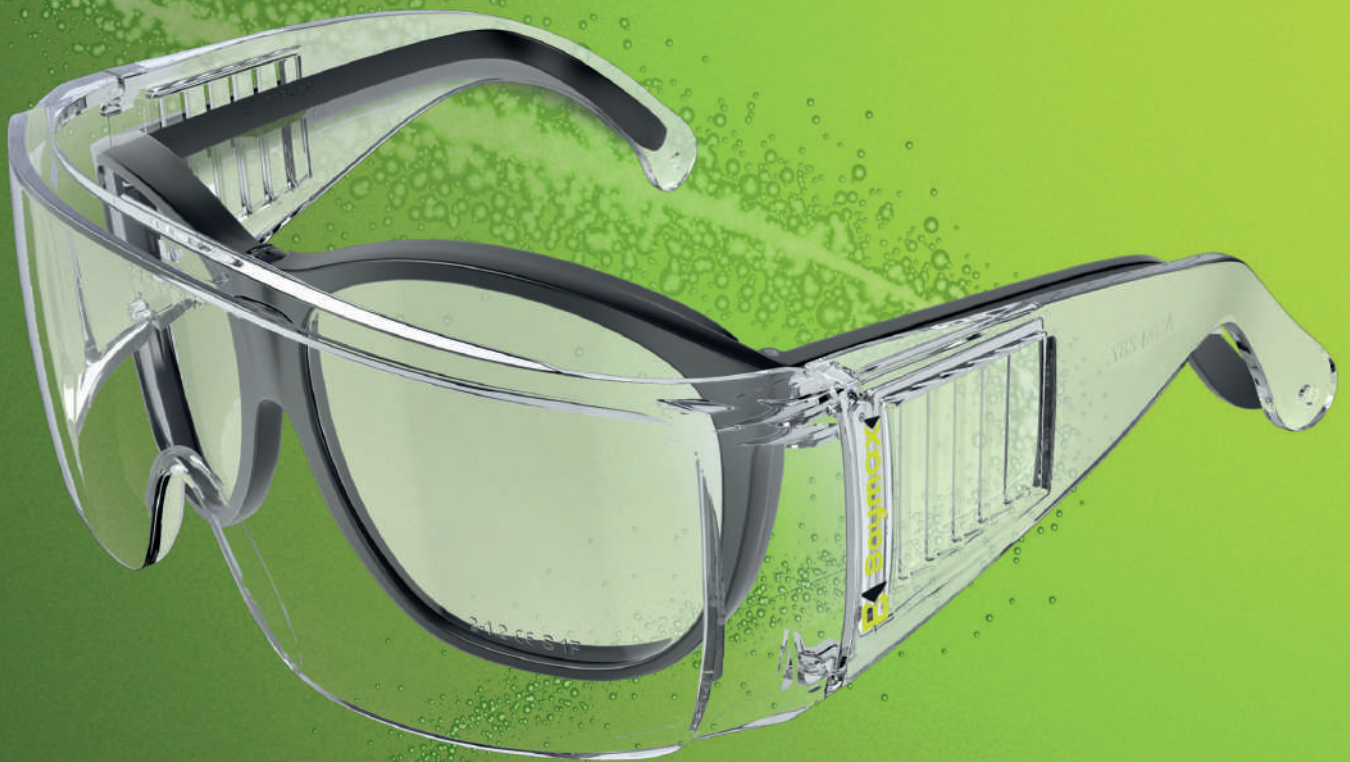
## Set Content

- Yellow, Smoke, Welding and Transparent Lens with Anti-Fog (Anti-Fog and Anti-Scratch) feature
- Bag made of impact and water-resistant special fabric
- S-600 style frame with detachable feature
- Goggles cleaning wipes



# S-700 MAJOR

## COVERSPEC GLASSES



# S-700 MAJOR (Coverspec Glasses)



Standart	B01-0700-0002	B01-0700-0003	B01-0700-0004	B01-0700-0005	B01-0700-0006	B01-0700-0007	B01-0700-0201	-
Anti-Fog	B01-0700-0102	B01-0700-0103	B01-0700-0104	B01-0700-0105	B01-0700-0106	B01-0700-0107	-	B01-0700-0301



Note: The "+" symbol Indicates Addable Features.

## Product Code

B01-0700-0001

B01-0700-0101 Anti-Fog

## Technical Details Body

<b>Side Arms</b>	
Material	Polycarbonate
<b>Marking</b>	
Manufacturer´s ID code	W
Applicable EN norm	166, 170
Impact resistance	F (45 m/s)
Resistance to high speed particles at extremes of temperature	T
Conformity symbol	CE

## Technical Details Lens

Material	Polycarbonate
Thickness	1.9 mm at PD
UV protection	UV 400
<b>Marking</b>	
Filter	2C-1.2 (EN 170)
Manufacturer´s ID code	W
Optical class	2
Impact resistance	F (45 m/s)
Resistance to high speed particles at extremes of temperature	T
Scratch resistance	K
Antifog	N
Conformity symbol	CE



## PACKAGE DETAILS

Product Weight: 41 Gr  
 Number of Boxes: 10 Pieces  
 Number of Parcels: 300 Pieces  
 Parcel Weight: 16,5 Kg  
 Parcel Dimension: 56x50x56 Cm



# S-800 HUNTER COMFORT



2 axis movement temples provide complete comfort by moving back and forth and up and down.



Adjustable

Standart	B01-0800-0002	B01-0800-0003	B01-0800-0004	B01-0800-0005	B01-0800-0006	B01-0800-0007	B01-0800-0201	-
Anti-Fog	B01-0800-0102	B01-0800-0103	B01-0800-0104	B01-0800-0105	B01-0800-0106	B01-0800-0107	-	B01-0800-0301



Note: The "+" symbol Indicates Addable Features.

## Product Code

B01-0800-0001  
B01-0800-0101 Anti-Fog

## Technical Details Body

Side Arms	
Material	Polyamide 6, Polycarbonate
Marking	
Manufacturer´s ID code	W
Applicable EN norm	166, 170
Impact resistance	F (45 m/s)
Resistance to high speed particles at extremes of temperature	T
Conformity symbol	CE

## Technical Details Lens

Material	Polycarbonate
Thickness	1.9 mm at PD
Coating	ANTI-FOG
UV protection	UV 400
Marking	
Filter	2C-1.2 (EN 170)
Manufacturer´s ID code	W
Optical class	1
Impact resistance	F (45 m/s)
Resistance to high speed particles at extremes of temperature	T
Scratch resistance	K
Antifog	N
Conformity symbol	CE



## PACKAGE DETAILS

Product Weight: 32 Gr  
Number of Boxes: 12 Pieces  
Number of Parcels: 360 Pieces  
Parcel Weight: 16 Kg  
Parcel Dimension: 56x50x56 Cm



# S-900 CURVED



Standart	B01-0900-0002	B01-0900-0003	B01-0900-0004	B01-0900-0005	B01-0900-0006	B01-0900-0007	B01-0900-0201	-
Anti-Fog	B01-0900-0102	B01-0900-0103	B01-0900-0104	B01-0900-0105	B01-0900-0106	B01-0900-0107	-	B01-0900-0301



Note: The "+" symbol Indicates Addable Features.

## Product Code

B01-0900-0001  
B01-0900-0101 Anti-Fog

## Technical Details Body

<b>Side Arms</b>	
Material	Polyamide 6
<b>Marking</b>	
Manufacturer´s ID code	W
Applicable EN norm	166, 170
Impact resistance	F (45 m/s)
Resistance to high speed particles at extremes of temperature	T
Conformity symbol	CE

## Technical Details Lens

Material	Polycarbonate
Thickness	1.9 mm at PD
Coating	ANTI-FOG
UV protection	UV 400
<b>Marking</b>	
Filter	2C-1.2 (EN 170)
Manufacturer´s ID code	W
Optical class	1
Impact resistance	F (45 m/s)
Resistance to high speed particles at extremes of temperature	T
Scratch resistance	K
Antifog	N
Conformity symbol	CE



## PACKAGE DETAILS

Product Weight: 24 Gr  
Number of Boxes: 12 Pieces  
Number of Parcels: 360 Pieces  
Parcel Weight: 14 Kg  
Parcel Dimension: 56x50x56 Cm



# S-1100 QUATTRO



Standart	B01-1100-0002	B01-1100-0003	B01-1100-0004	B01-1100-0005	B01-1100-0006	B01-1100-0007	B01-1100-0201	-
Anti-Fog	B01-1100-0102	B01-1100-0103	B01-1100-0104	B01-1100-0105	B01-1100-0106	B01-1100-0107	-	B01-1100-0301



Note: The "+" symbol Indicates Addable Features.

## Product Code

B01-1100-0001

B01-1100-0101 Anti-Fog

## Technical Details Body

Side Arms	
Material	Polycarbonate
Marking	
Manufacturer´s ID code	W
Applicable EN norm	166, 170
Impact resistance	F (45 m/s)
Resistance to high speed particles at extremes of temperature	T
Conformity symbol	CE

## Technical Details Lens

Material	Polycarbonate
Thickness	1.9 mm at PD
Coating	ANTI-FOG
UV protection	UV 400
Marking	
Filter	2C-1.2 (EN 170)
Manufacturer´s ID code	W
Optical class	2
Impact resistance	F (45 m/s)
Resistance to high speed particles at extremes of temperature	T
Scratch resistance	K
Antifog	N
Conformity symbol	CE



## PACKAGE DETAILS

Product Weight: 23 Gr  
 Number of Boxes: 12 Pieces  
 Number of Parcels: 360 Pieces  
 Parcel Weight: 12,5 Kg  
 Parcel Dimension: 56x50x56 Cm



# S-1551 QUATTRO



Standart	B01-1551-0002	B01-1551-0003	B01-1551-0004	B01-1551-0005	B01-1551-0006	B01-1551-0007
Anti-Fog	B01-1551-0102	B01-1551-0103	B01-1551-0104	B01-1551-0105	B01-1551-0106	B01-1551-0107



Note: The "+" symbol Indicates Addable Features.

## Product Code

B01-1551-0001

B01-1551-0101 Anti-Fog

## Technical Details Body

Side Arms	
Material	PVC
Marking	
Manufacturer´s ID code	W
Applicable EN norm	166, 169, 170
Impact resistance	F (45 m/s)
Resistance to high speed particles at extremes of temperature	T
Conformity symbol	CE

## Technical Details Lens

Material	Polycarbonate
Thickness	2.3 mm at PD
Coating (Optional)	ANTI-FOG
UV protection	UV 400
Marking	
Filter	2C-1.2 (EN 170)
Manufacturer´s ID code	W
Optical class	1
Impact resistance	F (45 m/s)
Resistance to high speed particles at extremes of temperature	T
Scratch resistance	K
Antifog	N
Conformity symbol	CE



## PACKAGE DETAILS

Product Weight: 81 Gr  
 Number of Boxes: 12 Pieces  
 Number of Parcels: 144 Pieces  
 Parcel Weight: 15 Kg  
 Parcel Dimension: 57x39x57Cm





# S-1551 QUATTRO VENTILED



Standart	B01-1551-0102	B01-1551-0103	B01-1551-0104	B01-1551-0105	B01-1551-0106	B01-1551-0107
Anti-Fog	B01-1551-0202	B01-1551-0203	B01-1551-0204	B01-1551-0205	B01-1551-0206	B01-1551-0207



Note: The "+" symbol Indicates Addable Features.

## Product Code

B01-1551-0101

B01-1551-0201 Anti-Fog

## Technical Details Body

Side Arms	
Material	PVC
Colour	Transparent
Marking	
Manufacturer´s ID code	W
Applicable EN norm	166, 169, 170
Impact resistance	F (45 m/s)
Resistance to high speed particles at extremes of temperature	T
Conformity symbol	CE

## Technical Details Lens

Material	Polycarbonate
Thickness	2.3 mm at PD
Coating (Optional)	ANTI-FOG
Colour	Clear
UV protection	UV 400
Marking	
Filter	2C-1.2 (EN 170)
Manufacturer´s ID code	W
Optical class	1
Impact resistance	F (45 m/s)
Resistance to high speed particles at extremes of temperature	T
Scratch resistance	K
Antifog	N
Conformity symbol	CE



## PACKAGE DETAILS

Product Weight: 87 Gr

Number of Boxes: 12 Pieces

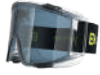
Number of Parcels: 144 Pieces

Parcel Weight: 16 Kg

Parcel Dimension: 57x39x57Cm



# S-550 GRAND



Standart	B01-0550-0002	B01-0550-0003	B01-0550-0004	B01-0550-0005	B01-0550-0006	B01-0550-0007	B01-0550-0035	-	B01-0550-0040
Anti-Fog	B01-0550-0022	B01-0550-0023	B01-0550-0024	B01-0550-0025	B01-0550-0026	B01-0550-0027	-	-	B01-0550-0040



UV Resistance



Anti-Reflective



Anti-Glare



Anti-Scratch



Anti-Fog



Protects from Sun



Anti-Stain



Anti-Dust

Note: The "+" symbol Indicates Addable Features.

## Product Code

B01-0550-0001

B01-0550-0021 Anti-Fog

## Technical Details Body

Side Arms	
Material	PVC
Marking	
Manufacturer´s ID code	W
Applicable EN norm	166, 170
Impact resistance	F (45 m/s)
Resistance to high speed particles at extremes of temperature	T
Conformity symbol	CE

## Technical Details Lens

Material	Polycarbonate
Thickness	2.3 mm at PD
Coating (Optional)	ANTI-FOG
UV protection	UV 400
Marking	
Filter	2C-1.2 (EN 170)
Manufacturer´s ID code	W
Optical class	2
Impact resistance	F (45 m/s)
Resistance to high speed particles at extremes of temperature	T
Scratch resistance	K
Antifog	N
Conformity symbol	CE



## PACKAGE DETAILS

Product Weight: 121 Gr

Number of Boxes: 12 Pieces

Number of Parcels: 144 Pieces

Parcel Weight: 20,5 Kg

Parcel Dimension: 57x39x57Cm



# S-550 GRAND ADJUSTABLE



With its adjustable rubber band, it adapts to any head shape.



Standart	B01-0550-0102	B01-0550-0103	B01-0550-0104	B01-0550-0105	B01-0550-0106	B01-0550-0107	B01-0550-0301	-
Anti-Fog	B01-0550-0202	B01-0550-0203	B01-0550-0204	B01-0550-0205	B01-0550-0206	B01-0550-0207	-	B01-0550-0401



Note: The "+" symbol Indicates Addable Features.

## Product Code

B01-0550-0101  
B01-0550-0201 Anti-Fog

## Technical Details Body

Side Arms	
Material	PVC
Marking	
Manufacturer´s ID code	W
Applicable EN norm	166, 170
Impact resistance	F (45 m/s)
Resistance to high speed particles at extremes of temperature	T
Conformity symbol	CE

## Technical Details Lens

Material	Polycarbonate
Thickness	2.3 mm at PD
Coating	ANTI-FOG
UV protection	UV 400
Marking	
Filter	2C-1.2 (EN 170)
Manufacturer´s ID code	W
Optical class	1
Impact resistance	F (45 m/s)
Resistance to high speed particles at extremes of temperature	T
Scratch resistance	K
Antifog	N
Conformity symbol	CE



## PACKAGE DETAILS

Product Weight: 125 Gr  
Number of Boxes: 12 Pieces  
Number of Parcels: 144 Pieces  
Parcel Weight: 21,5 Kg  
Parcel Dimension: 57x39x57Cm



# S-550 GRAND

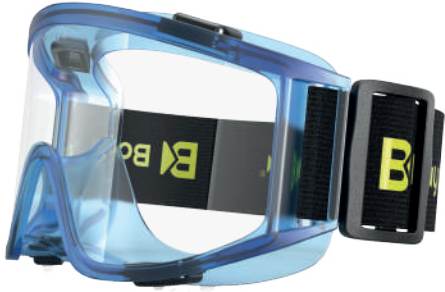
DESERT YELLOW



# S-550

## SPECIAL PRODUCTION COLOR AND FRAME OPTIONS

### FRAME COLORS



**BLUE**



**RED**



**BLACK**



**TRANSPARENT**



**DESERT YELLOW**



**KHAKI**



**GREEN**



**BLACK FRAME GREEN VENTILED**

### LENS COLORS



**TRANSPARENT**



**SMOKE**



**BLACK**



**BLUE**



**YELLOW**



**RED**



**GREEN**



**BROWN**



**RAINBOW MIRRORED**



**SILVER MIRRORED**



# RUBBER CUSTOMIZATION



## S-550 GRAND

42 x 4 Cm JACQUARD WOVEN RUBBER



DIFFERENT COLOR OPTIONS



## S-550 GRAND ADJUSTABLE

60 x 4 Cm JACQUARD WOVEN RUBBER ADJUSTABLE





**B**  
**Baymaxi**

**NEW  
PRODUCT**

**BX-2500**  
**SOLO**

# BX-2500 SOLO



Standart	B01-2500-0002	B01-2500-0003	B01-2500-0004	B01-2500-0005	B01-2500-0006	B01-2500-0007	B01-2500-0070	-
Anti-Fog	B01-2500-0052	B01-2500-0053	B01-2500-0054	B01-2500-0055	B01-2500-0056	B01-2500-0057	-	B01-2500-0080



Note: The "+" symbol Indicates Addable Features.

## Product Code

B01-2500-0001

B01-2500-0051 Anti-Fog

## Technical Details Body

Side Arms	
Material	Polypropylene, PVC
Marking	
Manufacturer´s ID code	W
Applicable EN norm	166, 167, 169, 170, 172
Impact resistance	F (45 m/s)
Resistance to high speed particles at extremes of temperature	T
Conformity symbol	CE

## Technical Details Lens

Material	Polycarbonate
Thickness	1.9 mm at PD
Coating (Optional)	ANTI-FOG
UV protection	UV 400
Marking	
Filter	2C-1.2 (EN 170)
Manufacturer´s ID code	W
Optical class	1
Impact resistance	F (45 m/s)
Resistance to high speed particles at extremes of temperature	T
Scratch resistance	K
Antifog	N
Conformity symbol	CE



## PACKAGE DETAILS

Product Weight: 31 Gr  
 Number of Boxes: 12 Pieces  
 Number of Parcels: 192 Pieces  
 Parcel Weight: 8,7 Kg  
 Parcel Dimension: 44x55x31,5 Cm





# BX-2500 SOLO ERGO



Standart	B01-2500-0102	B01-2500-0103	B01-2500-0104	B01-2500-0105	B01-2500-0106	B01-2500-0107	B01-2500-0170	-
Anti-Fog	B01-2500-0152	B01-2500-0153	B01-2500-0154	B01-2500-0155	B01-2500-0156	B01-2500-0157	-	B01-2500-0180



Note: The "+" symbol Indicates Addable Features.

## Product Code

B01-2500-0101  
B01-2500-0151 Anti-Fog

## Technical Details Body

Side Arms	
Material	Polypropylene, PVC
Marking	
Manufacturer´s ID code	W
Applicable EN norm	166, 167, 169, 170, 172
Impact resistance	F (45 m/s)
Resistance to high speed particles at extremes of temperature	T
Conformity symbol	CE

## Technical Details Lens

Material	Polycarbonate
Thickness	1.9 mm at PD
Coating (Optional)	ANTI-FOG
UV protection	UV 400
Marking	
Filter	2C-1.2 (EN 170)
Manufacturer´s ID code	W
Optical class	1
Impact resistance	F (45 m/s)
Resistance to high speed particles at extremes of temperature	T
Scratch resistance	K
Antifog	N
Conformity symbol	CE



## PACKAGE DETAILS

Product Weight: 35 Gr  
Number of Boxes: 12 Pieces  
Number of Parcels: 192 Pieces  
Parcel Weight: 9,3 Kg  
Parcel Dimension: 44x55x31,5 Cm



# BX-2500 SOLO DUAL



Head rubber is easily removable.



Standart	B01-2500-0202	B01-2500-0203	B01-2500-0204	B01-2500-0205	B01-2500-0206	B01-2500-0207	B01-2500-0270	-
Anti-Fog	B01-2500-0252	B01-2500-0253	B01-2500-0254	B01-2500-0255	B01-2500-0256	B01-2500-0257	-	B01-2500-0280



UV Resistance



Anti-Reflective



Anti-Glare



Anti-Scratch



Anti-Fog



Protects from Sun



Anti-Stain



Anti-Dust

Note: The "+" symbol Indicates Addable Features.

## Product Code

B01-2500-0201

B01-2500-0251 Anti-Fog

## Technical Details Body

Side Arms	
Material	Polypropylene, PVC
Marking	
Manufacturer´s ID code	W
Applicable EN norm	166, 167, 169, 170, 172
Impact resistance	F (45 m/s)
Resistance to high speed particles at extremes of temperature	T
Conformity symbol	CE

## Technical Details Lens

Material	Polycarbonate
Thickness	1.9 mm at PD
Coating (Optional)	ANTI-FOG
UV protection	UV 400
Marking	
Filter	2C-1.2 (EN 170)
Manufacturer´s ID code	W
Optical class	1
Impact resistance	F (45 m/s)
Resistance to high speed particles at extremes of temperature	T
Scratch resistance	K
Antifog	N
Conformity symbol	CE



## PACKAGE DETAILS

Product Weight:	45 Gr
Number of Boxes:	12 Pieces
Number of Parcels:	192 Pieces
Parcel Weight:	11,2 Kg
Parcel Dimension:	44x55x31,5 Cm



NEW  
PRODUCT

# BX-2500

## COMFORT



# BX-2500 COMFORT



Standart	B01-2500-0502	B01-2500-0503	B01-2500-0504	B01-2500-0505	B01-2500-0506	B01-2500-0507	B01-2500-0570	-	B01-2500-0580
Anti-Fog	B01-2500-0552	B01-2500-0553	B01-2500-0554	B01-2500-0555	B01-2500-0556	B01-2500-0557	-	-	B01-2500-0580



Note: The "+" symbol Indicates Addable Features.

## Product Code

B01-2500-0501

B01-2500-0551 Anti-Fog

## Technical Details Body

<b>Side Arms</b>	
Material	Polypropylene, PVC
<b>Marking</b>	
Manufacturer´s ID code	W
Applicable EN norm	166, 167, 169, 170, 172
Impact resistance	F (45 m/s)
Resistance to high speed particles at extremes of temperature	T
Conformity symbol	CE

## Technical Details Lens

Material	Polycarbonate
Thickness	1.9 mm at PD
Coating (Optional)	ANTI-FOG
UV protection	UV 400
<b>Marking</b>	
Filter	2C-1.2 (EN 170)
Manufacturer´s ID code	W
Optical class	1
Impact resistance	F (45 m/s)
Resistance to high speed particles at extremes of temperature	T
Scratch resistance	K
Antifog	N
Conformity symbol	CE



## PACKAGE DETAILS

Product Weight: 45 Gr  
 Number of Boxes: 12 Pieces  
 Number of Parcels: 192 Pieces  
 Parcel Weight: 11,2 Kg  
 Parcel Dimension: 44x55x31,5 Cm



# BX-2500 COMFORT ERGO



Standart	B01-2500-0602	B01-2500-0603	B01-2500-0604	B01-2500-0605	B01-2500-0606	B01-2500-0607	B01-2500-0670	-
Anti-Fog	B01-2500-0652	B01-2500-0653	B01-2500-0654	B01-2500-0655	B01-2500-0656	B01-2500-0657	-	B01-2500-0680



Note: The "+" symbol Indicates Addable Features.

## Product Code

B01-2500-0601

B01-2500-0651 Anti-Fog

## Technical Details Body

<b>Side Arms</b>	
Material	Polypropylene, PVC
<b>Marking</b>	
Manufacturer´s ID code	W
Applicable EN norm	166, 167, 169, 170, 172
Impact resistance	F (45 m/s)
Resistance to high speed particles at extremes of temperature	T
Conformity symbol	CE

## Technical Details Lens

Material	Polycarbonate
Thickness	1.9 mm at PD
Coating (Optional)	ANTI-FOG
UV protection	UV 400
<b>Marking</b>	
Filter	2C-1.2 (EN 170)
Manufacturer´s ID code	W
Optical class	1
Impact resistance	F (45 m/s)
Resistance to high speed particles at extremes of temperature	T
Scratch resistance	K
Antifog	N
Conformity symbol	CE



## PACKAGE DETAILS

Product Weight: 47,5 Gr  
 Number of Boxes: 12 Pieces  
 Number of Parcels: 192 Pieces  
 Parcel Weight: 11,7 Kg  
 Koli Boyutu: 44x55x31,5 Cm



# BX-2500 COMFORT DUAL



Head rubber is easily removable.



Standart	B01-2500-0702	B01-2500-0703	B01-2500-0704	B01-2500-0705	B01-2500-0706	B01-2500-0707	B01-2500-0770	-
Anti-Fog	B01-2500-0752	B01-2500-0753	B01-2500-0754	B01-2500-0755	B01-2500-0756	B01-2500-0757	-	B01-2500-0780



UV Resistance



Anti-Reflective



Anti-Glare



Anti-Scratch



Anti-Fog



Protects from Sun



Anti-Stain



Anti-Dust

Note: The "+" symbol Indicates Addable Features.

## Product Code

B01-2500-0701

B01-2500-0751 Anti-Fog

## Technical Details Body

Side Arms	
Material	Polypropylene, PVC
Marking	
Manufacturer´s ID code	W
Applicable EN norm	166, 167, 169, 170, 172
Impact resistance	F (45 m/s)
Resistance to high speed particles at extremes of temperature	T
Conformity symbol	CE

## Technical Details Lens

Material	Polycarbonate
Thickness	1.9 mm at PD
Coating (Optional)	ANTI-FOG
UV protection	UV 400
Marking	
Filter	2C-1.2 (EN 170)
Manufacturer´s ID code	W
Optical class	1
Impact resistance	F (45 m/s)
Resistance to high speed particles at extremes of temperature	T
Scratch resistance	K
Antifog	N
Conformity symbol	CE



## PACKAGE DETAILS

Product Weight: 57,3 Gr

Number of Boxes: 12 Pieces

Number of Parcels: 192 Pieces

Parcel Weight: 13,6 Kg

Parcel Dimension: 44x55x31,5 Cm



# BX-2550

## ARMOR



# BX-2550 ARMOR



Standart	B01-2550-0002	B01-2550-0003	B01-2550-0004	B01-2550-0005	B01-2550-0006	B01-2550-0007	B01-2550-0201	-
Anti-Fog	B01-2550-0102	B01-2550-0103	B01-2550-0104	B01-2550-0105	B01-2550-0106	B01-2550-0107	-	B01-2550-0301



Note: The "+" symbol Indicates Addable Features.

## Product Code

B01-2550-0001

B01-2550-0101 Anti-Fog

## Technical Details Body

Side Arms	
Material	Polypropylene, TPU
Marking	
Manufacturer's ID code	W
Applicable EN norm	166, 167, 169, 170, 172
Impact resistance	F (45 m/s)
Resistance to high speed particles at extremes of temperature	T
Conformity symbol	CE

## Technical Details Lens

Material	Polycarbonate
Thickness	1.9 mm at PD
Coating (Optional)	ANTI-FOG
UV protection	UV 400
Marking	
Filter	2C-1.2 (EN 170)
Manufacturer's ID code	W
Optical class	1
Impact resistance	F (45 m/s)
Resistance to high speed particles at extremes of temperature	T
Scratch resistance	K
Antifog	N
Conformity symbol	CE



## PACKAGE DETAILS

Product Weight: 82 Gr  
 Number of Parcels: 12 Pieces  
 Koli Adedi: 72 Pieces  
 Parcel Weight: 7,77 Kg  
 Parcel Dimension: 28x58x37 Cm





# MAX-WELD

## **BX-3200**

COLORMATIC  
GOGGLES



**AUTOMATIC DARKENING  
WELDING GOGGLES**



# Max-Weld BX-3200

## COLORMATIC GOGGLES



**AUTOMATIC DARKENING  
WELDING GOGGLES**



**ADJUSTABLE HEAD  
RUBBER BAND**



**PROTECTIVE ZIPPER BAG**



**SCREEN SAVER FILM**

### Product Code

B01-3200-0001

### Product Details

**Type:** Automatic darkening welding glasses

**Energy supply:** Solar

**Shading level:** 6-13 level

**Frame color:** black

**Professional Welding Goggles:** This solar auto darkening welding goggle is made of high quality PP material, sturdy and durable to use; Designed with soft rubber, very comfortable to wear for long time; It also features anti-ultraviolet, infrared radiation, anti-, can well protect your eyes during works.

**Auto Darking Design:** Auto-darkening filter automatically changes from a light state to a dark state when an arc is struck, and it returns to the light state when welding stops.

**Well Protection:** The welding goggles with adjustable shade are designed to protect the eyes from sparks, and harmful radiation.

**Convenient to Use:** Temple lengths and head-mounted strap can be adjusted, automatic variable light lenses are lightweight and convenient.

**Widely Applications:** Easy and safety to operate, light weight design; Applicable to electric welding, gas shielded welding, argon arc welding, electric saw, welding, etc.



### PACKAGE DETAILS

Product Weight: 70 Gr

Bag Weight: 35 Pieces

Number of Parcels: 100 Pieces

Parcel Weight: 12 Kg

Parcel Dimension: 53x40x36 Cm





BXI 5010

Baymaxi®

# Max-Weld

BX-5010 DUAL

# Max-Weld BX-5010 Dual Digi-Pro (Led Screen)

**NEW**

**TRUE COLOR TECH**

ANTI-FOG LENS

**PROTECTIVE STANDARD**  
EN 166 - EN 170 - EN 175 - EN 379

**BX-5030 DIGITAL ADJUSTABLE LENS**

Power Supply Type: Solar Energy + Battery  
 Bright Mode Level: DIN4  
 Dark Mode Level: DIN5-8/9-13  
 Lens Size: 110\*90mm  
 Visible Area: 100x53mm  
 Dark Mode Setting Method: Adjustable  
 Dimming Response Time: 1/25000s  
 Response Time: 0.1s  
 Number of Welding Detection Sensors: 4  
 Greynding Function: No  
 Launch Sensitivity: Not Adjustable  
 Delay Sensitivity: Not Adjustable  
 Operating Temperature: -10°C~65°C  
 Optical Class: 1/1/1

## PACKAGE DETAILS



- Number of Boxes:** 1 Piece
- Number of Parcels:** 12 Piece
- Product Weight:** 695 Gr
- Parcel Weight:** 10,5 Kg
- Parcel Dimension:** 81x47x62 Cm

# MAX-WELD BX-5010

## SOLO



5010 Lens



- Power Supply Type: Solar Energy + Battery
- Bright Mode Level: DIN3
- Dark Mode Level: DIN11
- Lens Size: 110\*90mm
- Visible Area: 90×30mm
- Dark Mode Setting Method: Not Adjustable
- Dimming Response Time: 1/25000s
- Response Time: 0.1s
- Number of Welding Detection Sensors: 2
- Greynding Function: No
- Launch Sensitivity: Not Adjustable
- Delay Sensitivity: Not Adjustable
- Operating Temperature -10°C ~ 65°C

## SOLO ADJUSTABLE



5020 Lens



- Power Supply Type: Solar Energy + Battery
- Bright Mode Level: DIN3
- Dark Mode Level: DIN9-11
- Lens Size: 110\*90mm
- Visible Area: 90×30mm
- Dark Mode Setting Method: Adjustable
- Dimming Response Time: 1/25000s
- Response Time: 0.1s
- Number of Welding Detection Sensors: 2
- Greynding Function: Yes
- Launch Sensitivity: Not Adjustable
- Delay Sensitivity: Not Adjustable
- Operating Temperature: -10°C ~ 65°C

## SOLO PRO ADJUSTABLE



5030 Lens



- Power Supply Type: Bright Mode Level: DIN3
- Dark Mode Level: DIN9-13
- Lens Size: 110\*90mm
- Visible Area: 92×43mm
- Dark Mode Setting Method: Adjustable
- Dimming Response Time: 1/25000s
- Response Time: 0.1s
- Number of Welding Detection Sensors: 2
- Greynding Function: Yes
- Launch Sensitivity: Adjustable
- Delay Sensitivity: Adjustable
- Operating Temperature: -10°C ~ 65°C

<b>Material (Body)</b>	HDPE
<b>Thickness</b>	1.9 mm at PD
<b>Applicable EN norm</b>	175, 379
<b>UV protection</b>	UV 400
<b>Manufacturer's ID code</b>	W
<b>Optical class</b>	1
<b>Impact resistance</b>	F (45 m/s)

<b>Material (Body)</b>	HDPE
<b>Thickness</b>	1.9 mm at PD
<b>Applicable EN norm</b>	175, 379
<b>UV protection</b>	UV 400
<b>Manufacturer's ID code</b>	W
<b>Optical class</b>	1
<b>Impact resistance</b>	F (45 m/s)

<b>Material (Body)</b>	HDPE
<b>Thickness</b>	1.9 mm at PD
<b>Applicable EN norm</b>	175, 379
<b>UV protection</b>	UV 400
<b>Manufacturer's ID code</b>	W
<b>Optical class</b>	1
<b>Impact resistance</b>	F (45 m/s)

# MAX-WELD BX-5010

## SOLO



### Product Code

Mask: B01-5010-0001

Lens BX-5010: YM-5000-5010

External Protective Visor: YM-5000-0001

### 5010 Lens



- Power Supply Type: Solar Energy + Battery
- Bright Mode Level: DIN3
- Dark Mode Level: DIN11
- Lens Size: 110\*90mm
- Visible Area: 90\*30mm
- Dark Mode Setting Method: Not Adjustable
- Dimming Response Time: 1/25000s
- Response Time: 0.1s
- Number of Welding Detection Sensors: 2
- Greynding Function: No
- Launch Sensitivity: Not Adjustable
- Delay Sensitivity: Not Adjustable
- Operating Temperature -10°C ~ 65°C

### Product Technical Details

Material (Body)	HDPE
Thickness	1.9 mm at PD
Applicable EN norm	175, 379
UV protection	UV 400
Manufacturer's ID code	W
Optical class	1
Impact resistance	F (45 m/s)



### PACKAGE DETAILS

- Product Weight: 475 Gr
- Number of Boxes: 1 Piece
- Number of Parcels: 12 Pieces
- Parcel Weight: 8 Kg
- Parcel Dimension: 69x47x62 Cm

# MAX-WELD BX-5010

## SOLO ADJUSTABLE



### Product Code

Mask: B01-5010-0002

Lens BX-5010: YM-5000-5020

External Protective Visor: YM-5000-0001

### 5020 Lens



- Power Supply Type: Solar Energy + Battery
- Bright Mode Level: DIN3
- Dark Mode Level: DIN9-11
- Lens Size: 110\*90mm
- Visible Area: 90\*30mm
- Dark Mode Setting Method: Adjustable
- Dimming Response Time: 1/25000s
- Response Time: 0.1s
- Number of Welding Detection Sensors: 2
- Greynding Function: Yes
- Launch Sensitivity: Not Adjustable
- Delay Sensitivity: Not Adjustable
- Operating Temperature: -10°C ~ 65°C

### Product Technical Details

Material (Body)	HDPE
Thickness	1.9 mm at PD
Applicable EN norm	175, 379
UV protection	UV 400
Manufacturer's ID code	W
Optical class	1
Impact resistance	F (45 m/s)



### PACKAGE DETAILS

- Product Weight: 475 Gr
- Number of Boxes: 1 Piece
- Number of Parcels: 12 Pieces
- Parcel Weight: 8 Kg
- Parcel Dimension: 69x47x62 Cm



# MAX-WELD BX-5010

## SOLO PRO ADJUSTABLE



### Product Code

Mask: B01-5010-0003

Lens BX-5010: YM-5000-5030

External Protective Visor: YM-5000-0001

### 5030 Lens



- Power Supply Type: Bright Mode Level: DIN3
- Dark Mode Level: DIN9-13
- Lens Size: 110\*90mm
- Visible Area: 92x43mm
- Dark Mode Setting Method: Adjustable
- Dimming Response Time: 1/25000s
- Response Time: 0.1s
- Number of Welding Detection Sensors: 2
- Greynding Function: Yes
- Launch Sensitivity: Adjustable
- Delay Sensitivity: Adjustable
- Operating Temperature: -10°C ~ 65°C

### Product Technical Details

Material (Body)	HDPE
Thickness	1.9 mm at PD
Applicable EN norm	175, 379
UV protection	UV 400
Manufacturer's ID code	W
Optical class	1
Impact resistance	F (45 m/s)



### PACKAGE DETAILS

- Product Weight: 475 Gr
- Number of Boxes: 1 Piece
- Number of Parcels: 12 Pieces
- Parcel Weight: 8 Kg
- Parcel Dimension: 69x47x62 Cm



# MAX-WELD **BX-5200**



HEAD WELDING MASK  
**NARROW**

HEAD WELDING MASK  
**WIDE**



# MAX-WELD BX-5200

WIDE  
8x11 CM WITH COVER



Glass excluded.

NARROW  
5x11 CM WITH COVER



Glass excluded.

## Product Code

B01-5200-0001

## Product Code

B01-5200-0002

### Product Technical Details

<b>Body</b>	
Material	HDPE
Colour	Black
<b>Marking</b>	
Manufacturer´s ID code	W
Applicable EN norm	175
Conformity symbol	CE



### PACKAGE DETAILS

Product Weight: 455 Gr  
 Number of Parcels: 25 Pieces  
 Parcel Weight: 7,6 Kg  
 Parcel Dimension: 69x47x62 Cm



**NEW  
PRODUCT**

# **BUMPCAP HELMET** Impact-Absorbing Cap



**B Baymaxi**  
ŞAPKA BARET || BUMP CAP HELMET

ISO CE

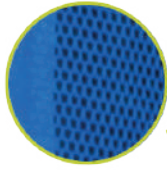
MADE IN TURKEY



# BX-6010 TABCAP HELMET

SUMMER

It is made of mesh fabric to allow fresh air.



The inner part protects against scrapes and impacts.



WHITE

B01-6000-0021



GRAY

B01-6000-0022



BLACK

B01-6000-0023



YELLOW

B01-6000-0024



LIGHT BLUE

B01-6000-0025



RED

B01-6000-0026



GREEN

B01-6000-0027



ORANGE

B01-6000-0028



DARK BLUE

B01-6000-0029

## Product Technical Details

Material	Cotton (Outside), ABS (Inside)
Thickness	1.9 mm at PD
Applicable EN norm	812/2012



## PACKAGE DETAILS

Product Weight: 159 Gr  
 Number of Parcels: 50 Pieces  
 Parcel Weight: 9 Kg  
 Parcel Dimension: 53x40x36 Cm



# BX-6010 TABCAP HELMET

## WINTER



The inner part protects against scrapes and impacts.



WHITE

B01-6000-0011



GRAY

B01-6000-0012



BLACK

B01-6000-0013



YELLOW

B01-6000-0014



LIGHT BLUE

B01-6000-0015



RED

B01-6000-0016



GREEN

B01-6000-0017



ORANGE

B01-6000-0018



DARK BLUE

B01-6000-0019

### Product Technical Details

Material	Cotton (Outside), ABS (Inside)
Thickness	1.9 mm at PD
Applicable EN norm	812/2012



### PACKAGE DETAILS

Product Weight: 159 Gr  
 Number of Parcels: 50 Pieces  
 Parcel Weight: 9 Kg  
 Parcel Dimension: 53x40x36 Cm



# OUR COVID-19 MODELS



## PROTECTIVE GOGGLES AGAINST INFECTIOUS DISEASES





# B Baymaxi®

+90 216 311 81 11

info@baymax.com.tr

baymax.turkiye

baymaxkoruyucuekipmanlari

baymaxppe

www.baymax.com.tr

Yunus Emre Mah. Ulubey Cad. NO:10 34791 Sancaktepe/İSTANBUL/TÜRKİYE

There may be a tonal difference in the product color depending on the studio lights.  
All rights reserved. It cannot be reproduced, distributed or used for any other purpose without permission.  
Copyright © 2022 Baymax Kişisel Koruyucu Donanımları Üretim Sanayi Ticaret Anonim Şirketi